

SHINSEI International (Thailand) Co., Ltd.

Type of Work Accepted

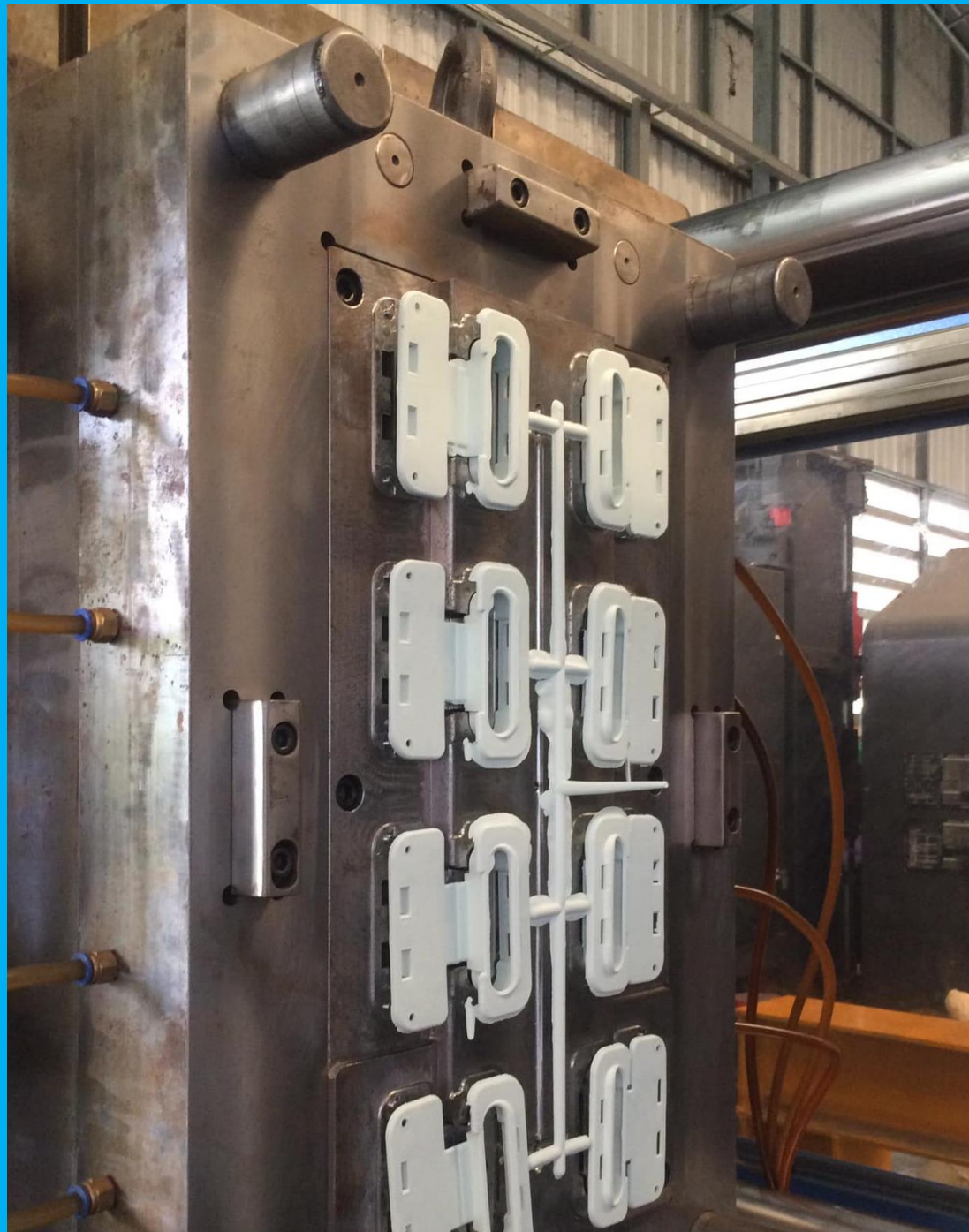
**Accepting Metal
Mold Creation**

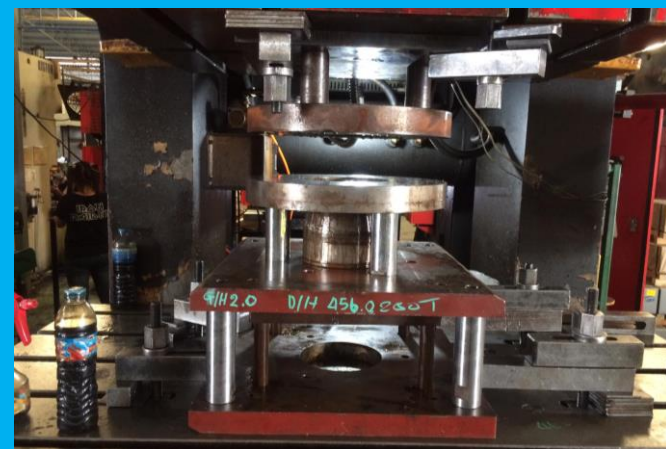
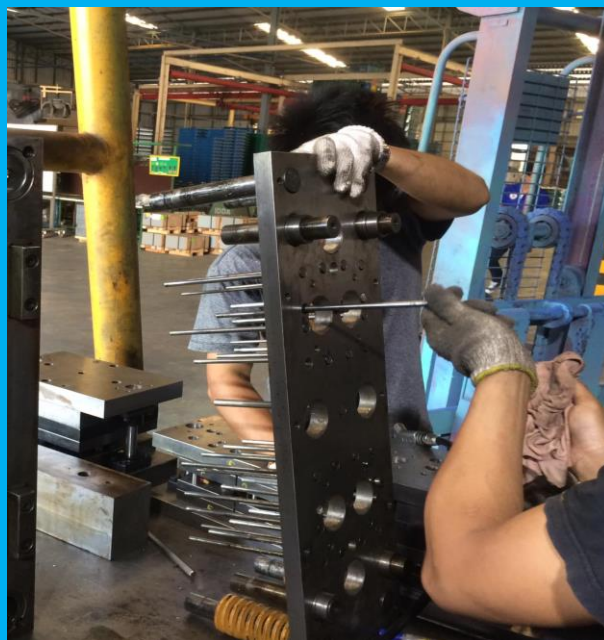
**Accepting Metal
Stamping Work**

**Spot & Robot
welding**

**Work According
to Customer
Designs**

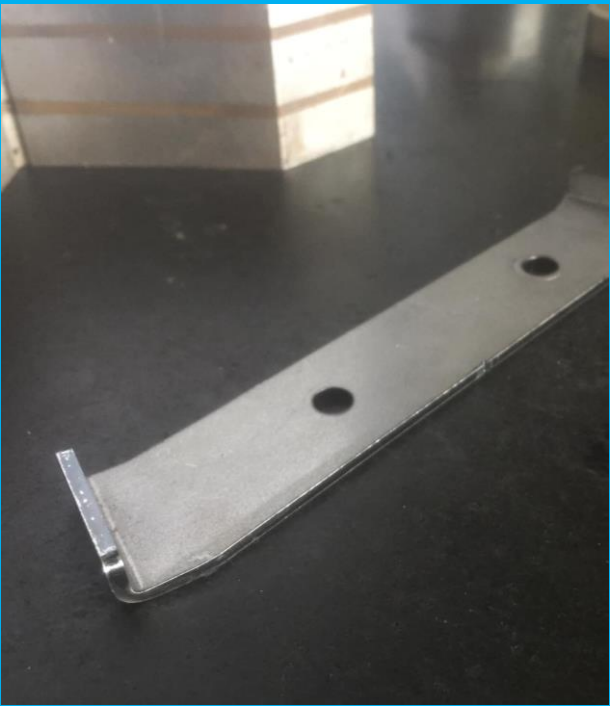
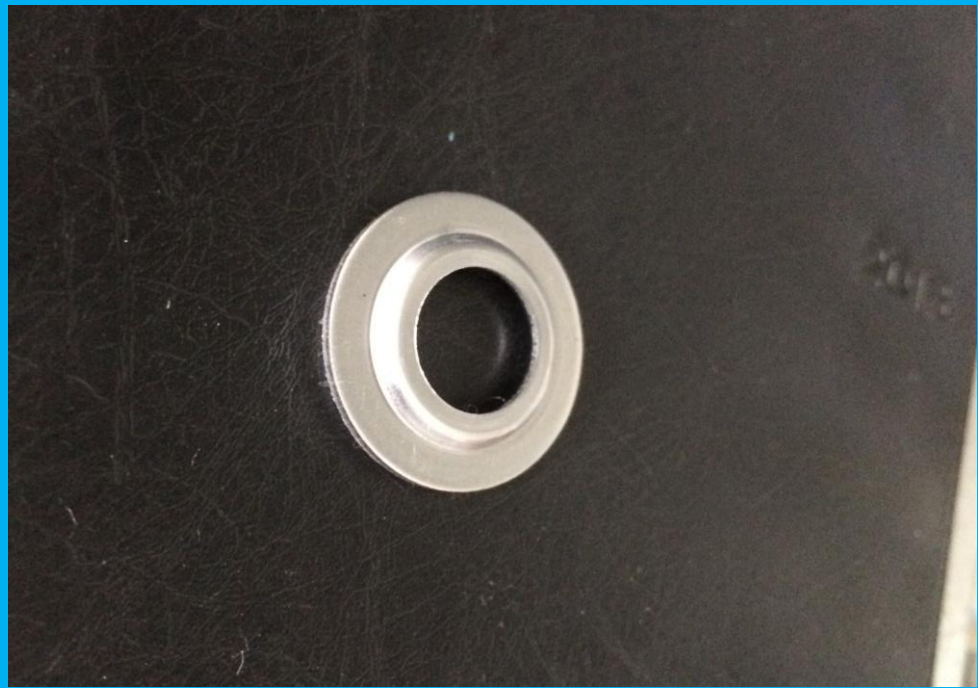
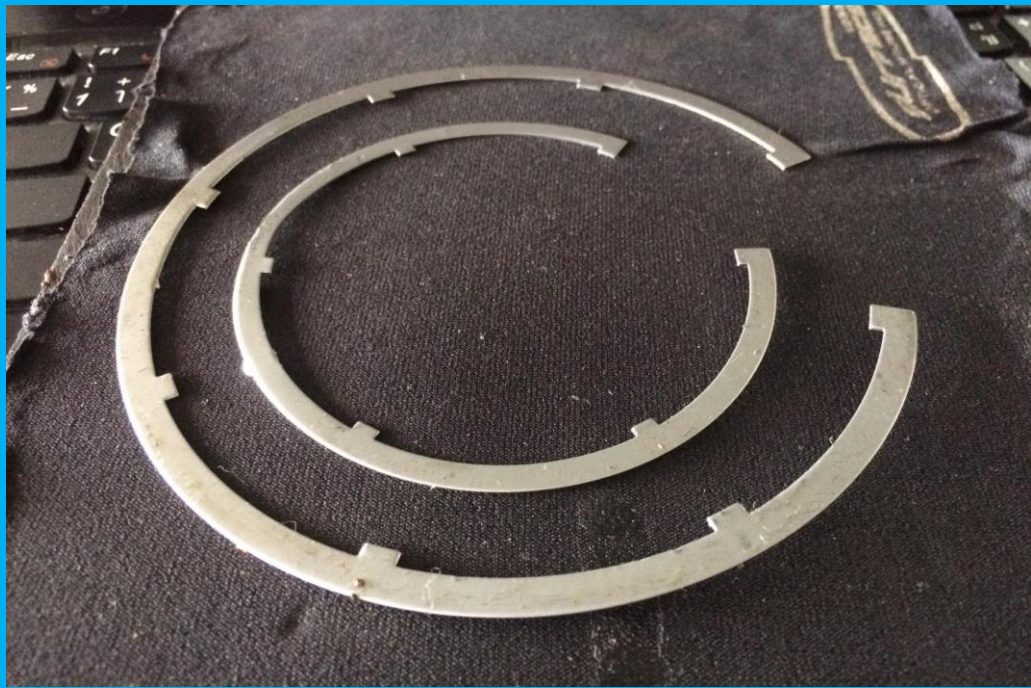
Accepting Metal Mold Creation



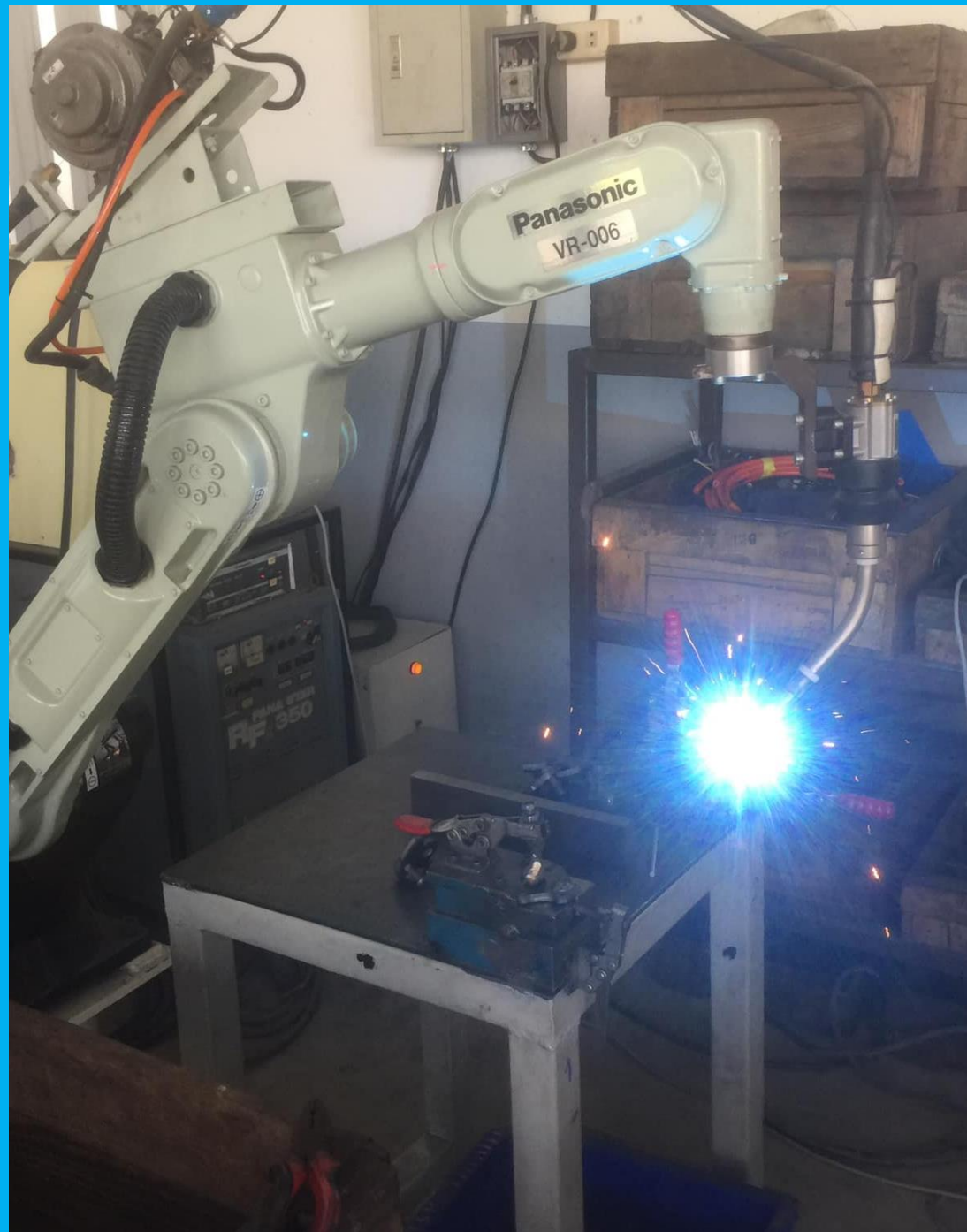


Accepting
Metal
Stamping
Work





Spot & Robot Welding



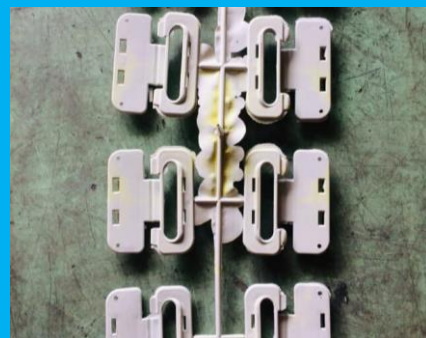


Work
According to
Customer
Designs

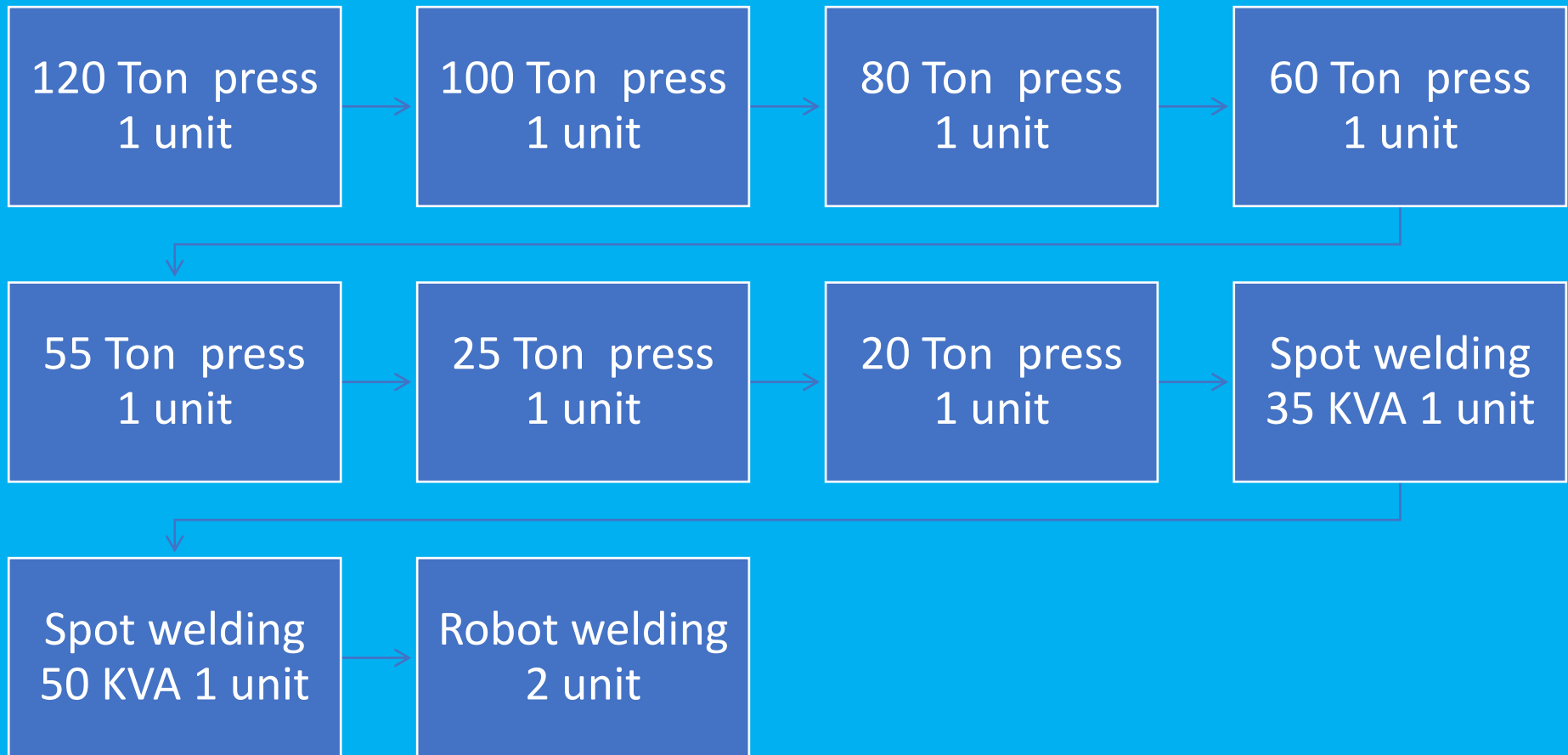




The workpiece produced



Workpiece Production Machine





SHINSEI International Thailand CO.,Ltd.
5th Floors of Asoke Towers located on 213/4-C
Sukhumvit21 Rd.,(Soi Asoke),
Klongtoey-Nua,Wattana,Bangkok 10110, Thailand
TEL 02-664-3335 FAX 02-664-3315